

# The Flivver Flash

The Official Newsletter of the Space City Ts of Houston, TX

## ***Path to a 1922 Model T Touring – Part 5***

By Stephen Havemann

*Continued from the March 2024 publication of Part 4 in The Flivver Flash.*

### **Replacing Wood Spokes:**

The finding of what appeared to be cracked spokes was enough to warrant inspection (did I

mention the spokes were making sawdust – that is sawdust, not rust, in the demountable rim). Upon removing the hub bolts, it was apparent my fear was correct.



So, the first item of business was to search the MTFCA Forum and YouTube for clues on how to proceed. I found a video of a [spoke press](#) and figured, how hard can it be. This guy makes it look easy. Off to build a spoke press!

The table used for assembling the differential now can serve as a spoke press. With one wheel disassembled, it seemed like a good idea to see if I could get the wheel back together before committing to the project. First, set the





spokes up in the rim like a Teepee; place the hub on top, add fender washer and nut, then start turning the wrench. Watch the spokes to make sure they stay aligned. The next thing you know, you have a wheel. That seems easy.



Now, let's order spokes. Normally, I just make my orders in the middle of the night online, but since there were several options, I called Lang's and got help from Steve as to what to buy. Steve was a great help getting me on the correct path.

With the order placed, the rest of the wheels were disassembled in preparation for painting the rims and hubs. Yet, there was a surprise waiting for me. The one wheel which was not making sawdust provided the ingenuity prior curators used to keep the car going. Yep, those blue things on the hub are bits of a hacksaw blade used as spacers.



With a little persuasion, the sleeves dropped into place. One small improvement added were neoprene inner seals to keep differential oil in the pumpkin and help keep it out of the outer bearings.

Here are some pictures of the parts in stages of being cleaned up. In the end, all the parts cleaned up nicely with 100+ years of grime removed. A little priming and paint, and they look like 100+ year old nicely painted parts. I am not going for a show car, so I do not spend time filling pitting from rust.





With the new spokes in hand, it is time to start preparing them for installation. Stained spokes sure look great, so I decided to stain the spokes, but what shade of stain to use. You can see the tips of six spokes stained with options considered.



Off to sanding. Man, that is a dirty job! What was I thinking, there are 48 spokes to sand. How perfect do they need to be? I sure do not want to do this again, so let's make it nice.



Around the shop there are lots of things saved because "I know I will need them". I just do not know what for. In this case it is 12-foot long 2x4. Drill 48 1/2" holes and you have a spoke drying rack. Stain and dry, varnish and dry, varnish again and dry, lightly sand then varnish again. Almost good enough, what the heck, one more light sanding and varnish again.



While waiting for the varnish to dry, it is time to see if I can take a little play out of the steering. The old steering gear set (right side of picture) shows a bit of wear.



The short answer is yes, the wear in the gears is causing a bit of play. To get the new gears to fit requires cleaning out years of built up dirt



and grease. It is a tight fit, but the new gears go in with new pins. Yes, I checked the bushing at the bottom of the steering shaft, and there is almost no play.

Did you ever imagine a red Solo cup would be a critical component to assembling wood spokes? A hole is drilled in the bottom of the cup so it will go over the threaded rod. The cup supports the spokes in the shape of a teepee. When the hub is added and the pressing begins, the red Solo cup compresses.



Here is the pressed in spokes prior to drilling holes for the hub bolts.



If you look closely at the picture, you will see the cup crushed. The new spokes sure require more torque to install than the practice installation with the old spokes!



Drilling was a bit nerve racking as the requirement is to drill from the rear hub and perfectly align with the hole in the outside hub plate. Drilling went easier than expected.

Here is a picture of Ms. Ellie in the sunshine with new spokes. It is time for a test drive. All is fine, so off for a breakfast run.



As I was pulling into the parking lot for breakfast, Denny Irvine said I had a wobble in the front left wheel. Upon checking it out, there was about  $\frac{3}{4}$ " movement in the wheel. We checked mounting in the parking lot and even swapped the demountable rim with the spare. No joy ... still wobbling.

To fix the wobble, I removed all the spokes and rechecked the rim to ensure it was true and not bent by laying it on the table saw (I had checked all the rims previously but wanted to check again – the rim was true). So, I reinserted the spokes in the rim, and still it wobbles. Time to call for advice. BTW, I also discovered the left rear wheel had a wobble. I called Steve at Lang's who referred me to Stutzman's Wheel Shop. Steve said chances are good Stutzman will be in the shop working, just leave a message and they will call back.

Noah called me back and I described the issue. He suggested pressing in the spokes without the hub in place then cut hub opening barely large enough for the hub and press the hub in.

This process worked on the left rear wheel, so I am feeling good! On to the left front wheel to repeat the success. In the process of pressing in the spokes, 3 of 12 spokes split and there was still a wobble in the wheel. Feeling defeated, I made another call to Stutzman's to see if he had time to replace the spokes for me. As of this writing, Noah at Stutzman has replaced the spokes and shipped it to me via UPS 2 days ago. I am awaiting delivery. I asked Noah what I did wrong? He said the spokes were too tight for the rim causing extra pressure and pushing the rim out of shape. Noah's process is to measure each rim and then cut the spokes to fit as all Model T rims are not of equal size.

In baseball, a 750 average would result in a lot of recognition and a huge contract. In the Model T world, I am just thankful there are sharp people like Steve at Lang's and Noah at Stutzman to help us keep these cars on the road.

---

**To make a gift to support the  
Model T  
Museum, [click here](#)  
or go here: [www.MTFCA.com](http://www.MTFCA.com)**

**Space City Ts Website: [www.spacecityts.org](http://www.spacecityts.org)  
Email: [modelt@spacecityts.org](mailto:modelt@spacecityts.org)  
FB: [Space City Ts of Houston Facebook](#)**





The George Ranch would like to invite The Space City T's to come out and show their cars for the following dates:

**June 15<sup>th</sup>** is our tribute to Father's Day: 8:30am- 4:30pm located at the 1930's George Ranch House. The car show will be a surprise to the fathers that come to see The George Ranch and for the groups taking a survival class at the 1830's.

**November 15<sup>th</sup>–16<sup>th</sup>** our biggest event out of the year called Frontier Days!!

Frontier Days consists of battle re-enactments, live entertainment, cowboys, games, historic home tours, vendors and food. We would like to have Model T's included as well.

Friday November 15<sup>th</sup>: 8am- 2pm located at the 1930's George Ranch House consist of lots of schools.

Saturday November 16<sup>th</sup> : 8am-5pm located at the 1930's George Ranch House will be open to the public

Plan on coming to show your Model T or for more information please contact:

Victoria Martinez Weaver

[vmartinez@georgeranch.org](mailto:vmartinez@georgeranch.org)

(346)620-0127 #252

Education Coordinator 1930 George Ranch House,

Education Department,

The George Ranch

10215 FM 762

Richmond, Texas 77406

# **THE ALVIN ROTARY CLUB**

**Presents the**

## **50<sup>TH</sup> ANNIVERSARY FRONTIER DAY CAR & BIKE SHOW**

### **April 27, 2024**

We are excited to announce the 50<sup>th</sup> Anniversary of our Frontier Day Show.

The Car and Bike Show along with a Parade, Arts & Crafts, Food Vendors, Live Bands, Carnival, and other activities, will be held in **National Oak Park, 118 S Magnolia, Alvin, Texas from 7:00 am to 4:30 pm** on April 27<sup>th</sup>.

Visit our website to check out all the events, registration, and new vehicle judging categories. Visit: <https://www.alvinrotary.org/sitepage/car-bike-show>

**The ONLINE Car and Bike entry fee is \$30 per class.** You can enter multiple classes; the first 100 entries will receive a commemorative dash plaque and a souvenir t-shirt while supplies last. Over 100 plaques and trophies to be awarded.

**Online \$30 Registration is open** Visit: <https://www.alvinrotary.org/sitepage/car-bike-show>

**In Person: Paying Day of Event Registration: 7:00 to 11:00 am** Entry is **\$40 per class.**

**Show Vehicles ONLY:** enter the park at 201 East Sealy Street, Alvin **before 11:00 am**

The weekend will be full of fun activities. This is a rain or shine event. Proceeds from this event are used to support local community charitable organizations. If you need additional information, contact: Ricky Kubeczka (713) 828-9477

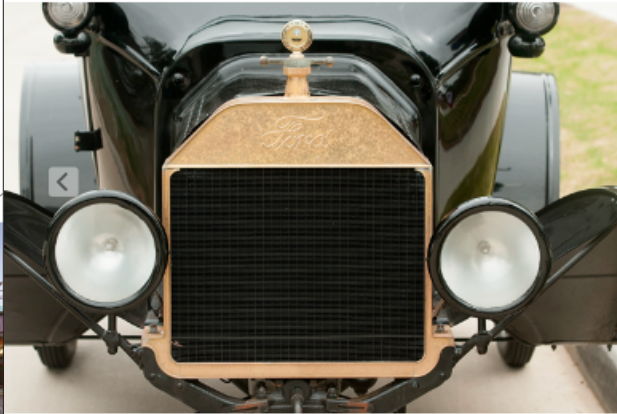
Thank you,

Ricky Kubeczka  
Alvin Rotary <[alvinrotaryclub@yahoo.com](mailto:alvinrotaryclub@yahoo.com)>

# 2024 Texas T Party, Kerrville, Texas October 16 – 19. 2024

<https://www.innofthehills.com/>

1-830-895-5000



FOUR DAYS OF HILL COUNTRY FUN

VISIT THE Y O RANCH

**Inn of the Hills Texas T Party rate \$109.00 per night + tax**  
**Inn of the Hills is a No Pets Hotel**

**Pet Friendly Alternative Hotels**

**LaQuinta Inn and Suites**  
**1940 Sidney Baker St., Kerrville, TX 77028**  
**1-830-896-9200**

**Hampton Inn Kerrville**  
**2038 Sidney Baker St., Kerrville, TX 77028**  
**1-830-257-0600**

**Best Western Sunday House Inn**  
**2124 Sidney Baker St., Kerrville, TX 77028**  
**1-830-896-1313**



The Flivver Flash is published by the Space City T's chapter of the Model T Ford Club of America in Houston, Texas twelve times per year. This newsletter is produced for the education and enjoyment of members and those expressing interest in joining the Space City T's. Said education and enjoyment is as it pertains to the Model T Ford automobile. The Flivver Flash is also shared with other antique auto clubs. Other clubs may use articles from this publication with credit to this newsletter or the original source. News, articles, ads or anything of interest to the club must be submitted to the editor by the 27th of the month preceding the month of publication. E-mailing occurs the last day of the month. Annual club dues are \$25 per year.

2024 Space City Club Officers and Board Members		
President	Tanner Grebe	936-537-7443
Vice President	David Carter	713-875-1049
Secretary	Rosie Stokley	832-444-9927
Treasurer	Craig Neuman	346-855-0544
Board Member	David Veir	713-823-2359
Board Member	Mike Schlitzkus	281-387-6658
Board Member	Dave Lucas	281-388-0761

## The FLIVVER FLASH

Anthony J. Marino  
302 Torrey Court  
League City, TX 77573  
281-482-4156

email: [modelt@spacecityts.org](mailto:modelt@spacecityts.org)

website: [www.spacecityts.org](http://www.spacecityts.org)

### For Sale: 1929 Model A Boat-Tail Speedster



2016 Keels & Wheels photo

'Boat-Tail' is from two 1947 International pickup hoods, 4 cylinder Model A engine with Stromberg downdraft carburetor, & modern intake manifold, Kelsey 16" 'bent spoke' wheels, and rebuilt electrical system.

**\$7995 OBO** ([more photos](#))

Please leave message or email:

**Anthony J. Marino**

**832-607-8528**

[topkick7@comcast.net](mailto:topkick7@comcast.net)

### FOR SALE

#### 1925 DOCTORS COUPE



PRETTY RED WITH BLACK TRIM. SHE HAS A FEW NICKS BECAUSE I DRIVE HER. RUNS REALLY GOOD, POWERFUL, ENGINE DOES 45MPH WITH EASE. GARAGED, NO RUST. MOSTLY ORIGINAL, EXCEPT DISTRIBUTOR AND INSIDE KIT. HAS LEATHER AND WOOD PANELS. FOR MORE INFO ON ENGINE CALL ROSS AT LILLEKER AUTO. **\$12,000**  
**ROSEMARY STOKLEY**  
**KATY, TX 1-832-444-9927**

## New Members Wanted

Please visit our [Space City T's of Houston Texas web site](#). If interested in becoming a member, please provide your name, address, mobile phone, & email, and make a \$25 check payable to the:

## Space City T's

Please mail your [information form](#) and check to the Treasurer at:

**Craig Neuman**  
**2302 Lord Nelson Drive**  
**Seabrook, TX 77586**

*A special "Thank You" to all club members who paid their 2024 dues!*

The Space City T's Club is the Houston, Texas chapter of the Model T Ford Club of America. All questions concerning membership, The Vintage Ford magazine, the MTFCA library, chapter insurance, purchase of manuals, back magazine issues, or store items can be directed to the following:

### Model T Ford Club of America

309 N. 8th Street  
Richmond, IN 47374-3034  
Phone: 765-373-3106

Email: [rachel@mtfca.com](mailto:rachel@mtfca.com)

\$50 annual dues includes six issues of the Vintage Ford  
Join or Renew at: [MTFCA Join or Renew](#)

## FLIVVER FLASH INPUTS NEEDED

Do you have something to share? A barn find, funny or not so funny Model T stories? Tour photos, or articles about Model T's? Your Model T acquisition stories, restoration photos or swap meet finds? A special interest article?

Please email ads, articles, [photos](#), [stories](#), [videos](#), or [links](#) to: [topkick7@outlook.com](mailto:topkick7@outlook.com)

## CLUB MEETING MONTHLY SCHEDULE

- April 10<sup>th</sup> – 7:30pm Face to Face at LifeBrook Church  
with Zoom and Demeris BBQ

- May 8<sup>th</sup> – 7:00pm Zoom virtual meeting only



**Dine with Friends at  
Demeris BBQ at 6:00 P.M.**

**located at**

**1702 West Loop North,  
Suite A, Houston, TX 77008**



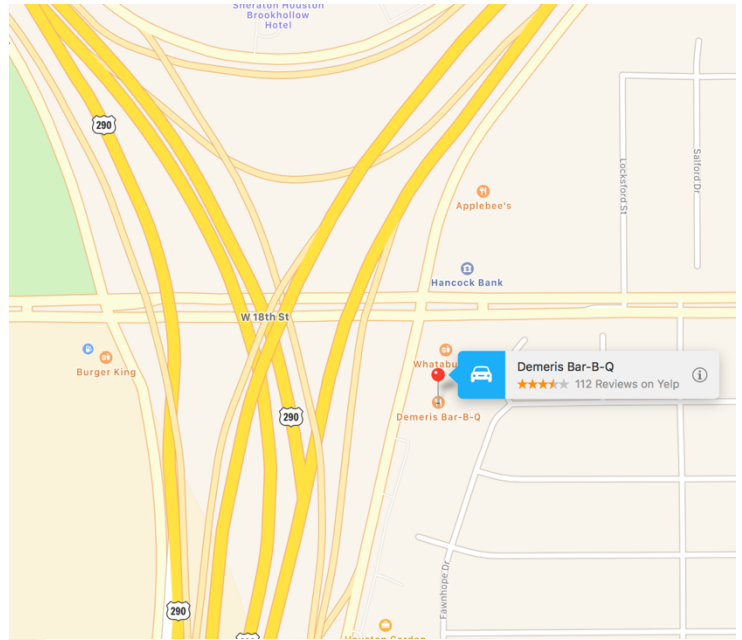
**Then attend the  
Space City T's Meeting at 7:30 P.M.**

**Place:**

**Lifebrook Church  
1822 West 18th Street in the Heights**

**Website: [www.spacecityts.org](http://www.spacecityts.org)**

**Email: [modelt@spacecityts.org](mailto:modelt@spacecityts.org)**



### Directions to Demeris BBQ

From the east or west on I-10 or the south side of downtown, take the I-610 West Loop North and get off at the 18th Street Exit. Demeris BBQ will be immediately on the right after Houston Garden Nursery.

From the west on Highway 290, exit at Mangum and turn right to 18th Street. At 18th, turn left, cross under West Loop and turn into the Whataburger parking lot on the right. Proceed to Demeris BBQ after the Whataburger.

From the north on I-45, take the 610 North Loop West around to the I-610 West Loop South to the Hempstead Highway exit. Make a U-turn under I-610 and proceed north on the frontage road to just before 18th Street, Demeris BBQ will be on your right after Houston Garden Center.



**First Class Mail**



Space City T's of Houston  
Anthony J. Marino  
302 Torrey Court  
League City, Texas 77573

**The FLIVVER FLASH**