



# The FLIVVER FLASH

The Official Newsletter of The Space City T's ~ Houston, Texas

*Fords crepitant primum, sed ipsi crepitant longissimae*



Volume 37 Issue 1

2014  
3

January 2014



## Inside This Issue

Tall and Narrow Tires... Again?	Page 2
Model T Official Paint Chip Guide	Page 3
Dues Are Due	Page 3
TT, Granddaddy to the F Series	Page 4
Dirk and Trudy ~ an Eventful Year	Page 7

The Flivver Flash is published by the Space City T's chapter of The Model T Ford Club of America in Houston, Texas twelve times per year. This newsletter is produced for the education, edification and enjoyment of members and those expressing interest in joining the Space City T's. Said education, edification and enjoyment is as it pertains to the Model T Ford automobile. The Flash is also shared with other antique auto clubs. Other clubs may feel free to use articles from this publication with credit to this newsletter or the original source. News, articles, ads or anything of interest to club for publication must be submitted to the editor by the deadline of the 20th of month preceding the month of publication. Printing takes place the last week of the month. Annual dues are \$25.00 per year.

Space City Club Officers and Board Members

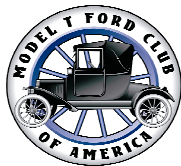
- |                       |                           |
|-----------------------|---------------------------|
| <b>President</b>      | <b>Rick McCracken</b>     |
| <b>Vice President</b> | <b>Broderick Thompson</b> |
| <b>Secretary</b>      | <b>Stan Hoekstra</b>      |
| <b>Treasurer</b>      | <b>Dave Lucas</b>         |
| <b>Board Member</b>   | <b>David Carter</b>       |
| <b>Board Member</b>   | <b>Denny Irvine</b>       |
| <b>Board Member</b>   | <b>Ted Adcock</b>         |

**The FLIVVER FLASH**

Editor: Stan Hoekstra  
 19427 Bear Springs Drive  
 Katy, Texas 77449  
 (281) 858-5577  
 email: stanhoekstra@att.net  
 http://spacecityts.org/  
 Webmeister: Doug Brough

The Space City T's Club is the Houston, Texas Chapter of The Model T Ford Club of America. All questions concerning membership in the Model T Ford Club of America, The Vintage Ford magazine, MTFCA Library, Chapter Insurance, purchase of manuals, back issues or store items can be directed to the following address:

Model T Ford Club of America  
 119 West Main Street, PO Box 126  
 Centerville, Indiana 47330  
 Phone: 765.855.5248  
 Fax: 765.855.3428



E-mail: jay@mtfca.com

Annual dues (includes six issues of The Vintage Ford)  
 U.S. \$40.00

Foreign \$50.00 Canada and \$56.00 for all other countries.

Foreign payments must be made in U.S. dollars and checks

**On The Cover**



As 2014 dawns, Lizzy expresses her heart felt emotion.

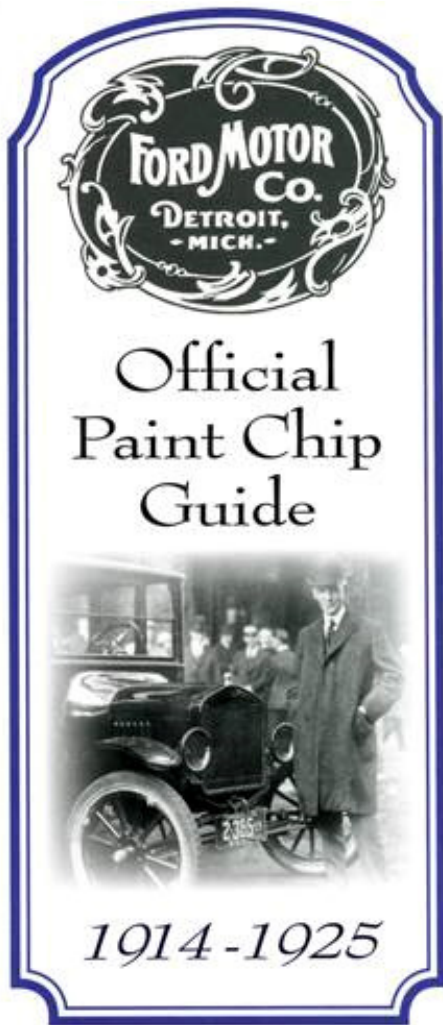
Thanks to Dennis Meyer of the Mad River T's for granting permission to use the cover art. The Mad River Ts Model T Ford Club, a Chapter of the Model T Ford Club of America, serves T enthusiasts in the northern Miami Valley of Ohio.

**Is There Nothing New Under The Sun?**

The following are excerpts from an ad in the December 23, 2013 issue of TIME Magazine.

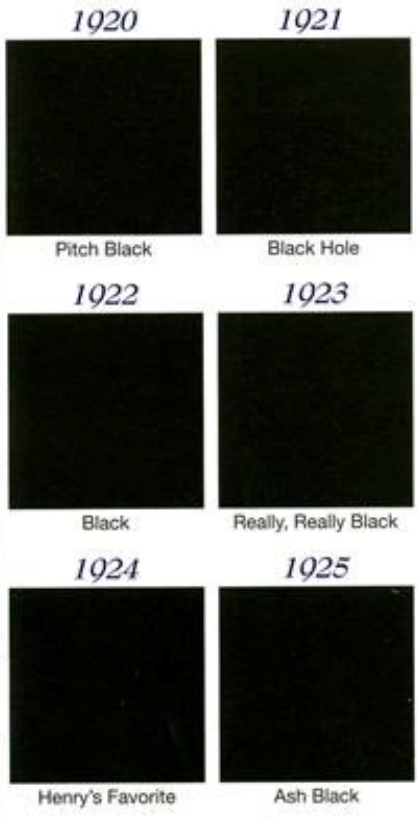
This March, at the International Motor Show in Geneva, Bridgestone announced that it had successfully developed a new "large and narrow" tire—a completely new category of tire that is narrower and features a larger diameter than conventional tires. Giving the tires larger vertical diameter and increasing their internal pressure greatly limits changes in the shape of the contact patch. In addition, optimization of the tires' structure and materials achieves a rolling resistance coefficient roughly 30% lower than conventional-sized tires (175/65R15). Furthermore, making the tires narrower reduces air resistance, a key factor for improving fuel efficiency. The new tires boast a level of fuel efficiency far in excess of the most fuel-efficient tires Bridgestone already has on the market.





*Ford Motor Company*

Model T Ford Color Selector  
1914 - 1925



"Any customer can have a car painted any color that he wants so long as it is black."

**Space City T's Christmas Dinner**

Your editor and spouse had RSVP'd to attend the dinner and the day before the event we were involved in an auto accident that put us on Flexirol the day of the dinner. We were in no condition to drive and to write up an article and shoot photos.

Dave Lucas dispatched the following to us: We had 34 members in attendance, had 1 hour for socializing, had a great dinner of fish, shrimp, chicken (your choice), had a lot of fun with the gift exchange, announced the 2014 club officers and adjourned.

**Installation of Officers and Directors**

The following slate of officers and directors were installed at the Christmas Dinner held on December 1

- |                       |                           |
|-----------------------|---------------------------|
| <b>President</b>      | <b>Rick McCracken</b>     |
| <b>Vice President</b> | <b>Broderick Thompson</b> |
| <b>Secretary</b>      | <b>Stan Hoekstra</b>      |
| <b>Treasurer</b>      | <b>Dave Lucas</b>         |
| <b>Board Member</b>   | <b>David Carter</b>       |
| <b>Board Member</b>   | <b>Bobby Wright</b>       |
| <b>Board Member</b>   | <b>Ted Adcock</b>         |

**Dues Are Due**

The deadline for dues payment is January 15. At that time the roster will be compiled according to those paid up. Dues are still \$25.00 per year

**Do not send dues to the editor**

Send all dues to our treasurer for 2014,

**Dave Lucas**

**NOTE: Dues are not tax deductible. To do so will jeopardize our club's 501c non-profit status with the IRS.**

**2014 Calendar of Coming Events**

January 8      **Space City T's Meeting**  
2014

**More Events to Follow**



## The Model TT

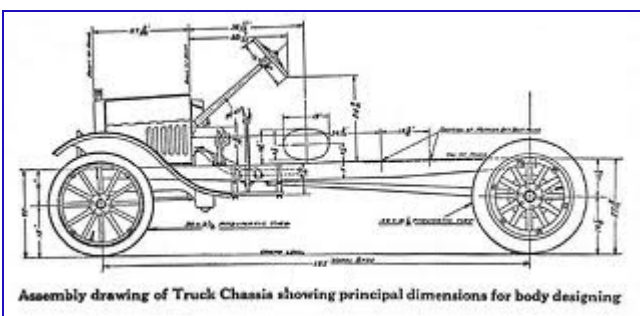
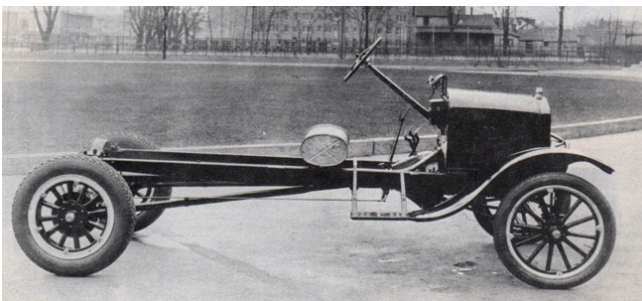
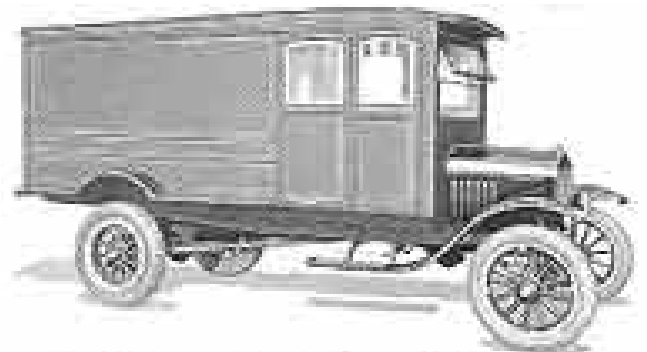
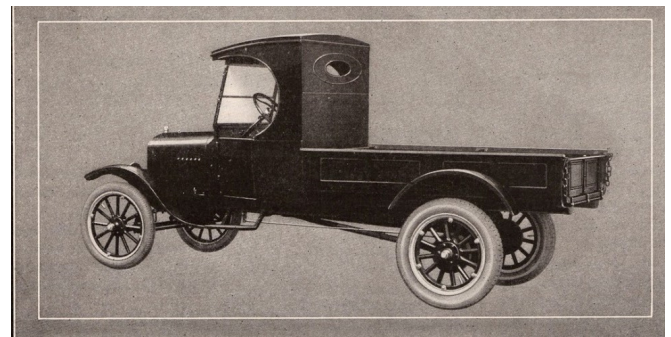
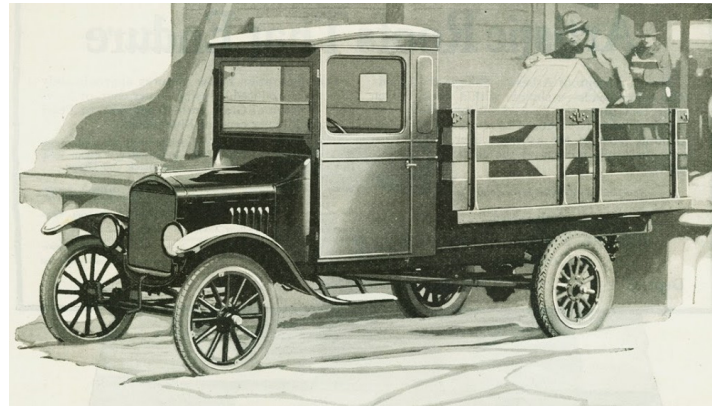
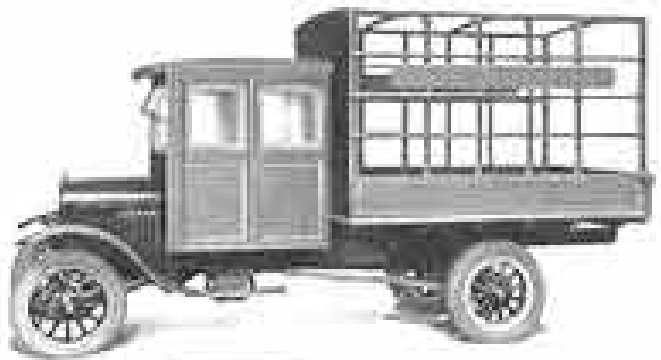
By Stan Hoekstra

The Model TT, also known as the Double T and/or the Ton Truck, was an outgrowth of the success of the Model T Ford automobile. By 1917, the car had established itself as an affordable, reliable and rugged mode of transportation. Not surprisingly, it became the platform for an even more rugged vehicle in the form of a truck.

In 1917 Ford introduced the TT based on the Model T. The truck incorporated the basic design of the car with the addition of a lengthened and beefed up frame upon which was mounted a worm drive differential and 16 x 20 rear tires and artillery spoke wheels suspended by a much heavier transvers leaf spring. Initially the TT was sold as bare chassis that included hood, front fenders and running boards, but sans cab. The buyer could opt for whatever configuration he wished to construct to be placed on the chassis. There were many iterations of cab styles and cargo carrying features. Beginning in 1924, Ford introduced the C-Cab followed by a more rectangular steel cab.

Standard worm gear ratio was 7.25:1, and special gearing gave a ratio of 5.17:1. Because of this tall gearing the TT with the standard planetary transmission had a top speed of about 15 m.p.h. The trucks were often augmented with auxiliary transmissions, such as the Warford and Jumbo, which permitted a wide gear range and consequently, both power and a higher top speed.

Beyond the basic chassis, the Ford truck saw an almost endless string of applications ranging from buses to fire engines to cement mixers and everything in between. In this article we display some these examples.









## Classified Ads

**For Sale: 1924 Coupe:** Standard axle, good upholstery and paint, fatboy steering wheel, generator, side fence, honeycomb radiator, #4 exhaust leak. Asking \$8500.. Contact: Richard Smith



**Wanted: Newsletter Editor** We looking for a new editor to take over the Flivver Flash. This will not be a jump in and sink or swim situation. We will be as involved as much or as little the new editor wishes. However we will not intrude. We will remain available to assist and do research for articles. If interested contact Stan Hoekstra

**For Sale: 1917 Model T Touring Car** I have \$15,500 invested and would like to get \$12,500. New tires, perfect body, It is a total restoration with electric starter. The body is rust free and in great condition. Ross of Lilleker Antique Auto Restorations reworked the transmission, clutch, and the engine runs great.



More photos at <http://transformationalchurchconsulting.com/about.htm>

**For Sale: Rebuilt Model T Ford Components**

Rebuilt Model T Transmission  
 Rebuilt Model T Starter  
 Rebuilt Model T Generator  
 Call Bill McRee for details

**For Sale: Two Model T's**



1915 Roadster ('Lil Red)



1924 Touring

The '24 has lots of extras such as a floating rear wheel bearing, high speed Ruckstell, Rocky Mountain brakes with Kevlar linings, ball-bearing 4th main, Kevlar transmission bands and clutch disk. The '15 has small version Rocky Mountain style brakes, starter and one piece exhaust/intake manifold.

The engines in both cars were built with special updates. High compression heads, aluminum pistons, stainless steel valves, hardened exhaust valve seats inserts, adjustable valve lifters, tour cam, modern spark plugs, alternator, modern carb and air filter. Both cars are 12 volt and have signal lights.

Contact: Robert Kirk

**For Sale or Trade 2003 190 Bay Boat Triumph**

In excellent condition. Has 115 Yamaha, Center Cold console, GPS, Fish Finder, MinnKotta Trolling motor, Triumph trailer. \$14,000.00 or best offer. Would trade for Model T.  
 Contact Leon

**For Sale: 1922 Coupe**

Suicide doors, mechanically sound, runs good, good top and upholstery. Asking \$9,500.  
 Contact Jerry Hathcoat

**Wanted: '27 Model T Front Bumper & Brackets**

Contact: Gaylord Willet

**For Sale: Walker Estate Model T's**

- 1915 Brass Roadster,
- 1925 Fordor Sedan,
- 1927 Tudor Sedan,
- 1926 Roadster,
- 1925 Touring,
- 1924 Roadster with Chevrolet Transmission

For complete photo depiction of the collection, see page 6 of the October 2013 issue of the Flivver Flash.

Contact: Craig Corley



**Free!!!** A set of Flivver Flash newsletters dating from 1999 to the present. Moving and reducing clutter. First come, first serve. Otherwise they go into the dumpster. Contact Terry Woods

We've Moved  
**Texas T Parts**



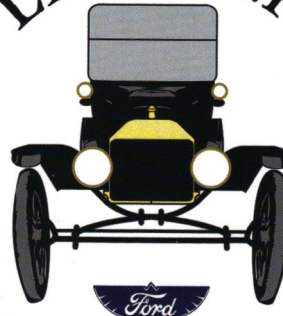
is now located at  
711 Ashford Hills Dr,  
Bryan, TX 77801  
1-800-337-6977  
www.TexasTParts.com

Hours: Mon - Thurs 9-5 (Closed Fri - Sun)

Distributors Sure-Stop Disc Brakes 600W Oil  
Bearings Warford Transmissions Gaskets  
Engine Parts Oil System Accessories Light Bulbs  
Wiring Forged Scat Crankshafts Alternators

*Everything you need to keep your Model T on the Road.*

**LILLEKER**



**ANTIQUE AUTO**  
MODEL A & MODEL T SPECIALIST

ROSS LILLEKER

979.218.4083  
WWW.MRMODEL.T.COM

We thank the  
good folks who  
advertise here in  
support of the  
Flivver Flash.

Please show  
your apprecia-  
tion by  
patronizing these

Mayes Fuller CPA  
A Certified Public Accounting Firm

**Mayes Fuller**  
Certified Public Accountant

115 East Second  
Hallettsville, TX 77964

361-798-5411  
713-882-5710  
979-263-5537

Email: mayesfuller@sbcglobal.net  
SKYPE: MAYES FULLER

Direct: (713) 802-6638

Cell: (832) 443-9833



**TOMMIE VAUGHN  
DAVID WATSON**

New, Used, Fleet & Credit Union Sales

**(713) 869-4661**

dwatson@tommievaughn.com  
1145 N. Shepherd • Houston, Texas 77008

## And We Close 2013 With This Message from the Regters

From: [Dirk Regter](#)

Edam, Holland, 23 December 2013.

Here is a message from the world travelers from Holland. Last year 2013 was a very special year for Trudy and Dirk. We got 3 grandsons, named; Wouter, Floris and Simon.

We also made the 2nd part of our World tour. We drove 28.000 km. (17.500 miles) through the USA. and Canada. We have seen a lot of beautiful places in the USA and Canada but the best memories will stay in our mind because of meeting all the nice people like you, during our trip. Trudy and Dirk and the several crews in the Land rover will say thanks to all of you by making this tour unforgettable for us. Next year, we will make our 3rd part through Central and South America. Again you can follow our travel adventures on our website: [www.modeltworldtour.com](http://www.modeltworldtour.com).



We wish you a Merry Christmas and a very good New Year.  
We hope that we will stay in touch. All the best wishes and good luck,  
Dirk and Trudy Regter





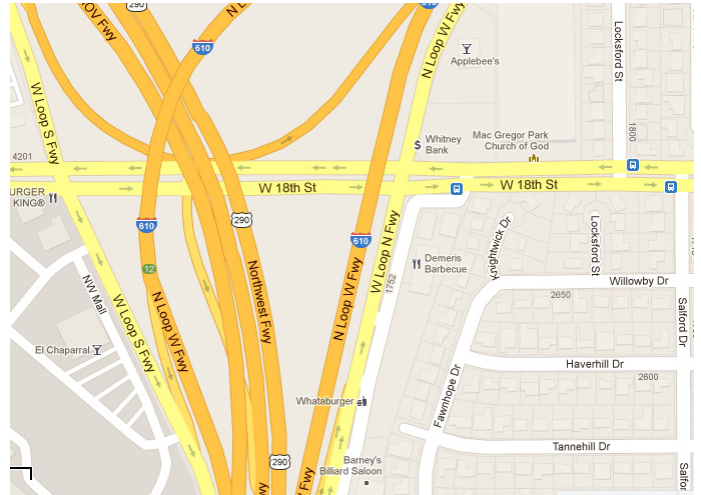
**Next Meeting  
January 8, 2014**



**Dine with Friends at  
Demeris BBQ at 6:00 P.M.  
located at 1702 West Loop North,  
Suite A, Houston, TX 77008**

**Then attend the Space City T's Meeting at 7:30 P.M.  
Place: Lazy Brook Baptist Church  
1822 West 18th Street in the Heights**

**Program:  
"Trip though the River Rouge Plant"**



**Directions to Demeris BBQ**

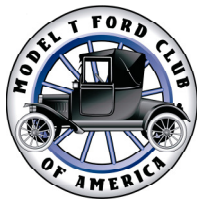
**From the east or west on I-10 or the south side of downtown, take the I-610 West Loop North and get off at the 18th Street Exit. Demeris BBQ will be right after Houston Garden Nursery.**

**From the west on Highway 290, exit at Mangum and turn right to 18th Street. At 18th, turn left, cross under West Loop and turn into the Whataburger parking lot on the right. Proceed to Demeris after Whataburger.**

**From the north on I-45, take the 610 North Loop West around to the I-610 West Loop South to the Hempstead Highway exit. Make a U-turn under I-610 and proceed north on the frontage road to just before 18th Street, Demeris will be on your right after Houston Garden Center.**

# The FLIVVER FLASH

Space City T's Chapter  
Editor: Stan Hoekstra  
19427 Bear Springs Drive  
Katy, Texas 77449



**First Class Mail**

